



# IB9365-LPR

License Plate Recognition Camera

Embedded LPR Software • Wiegand Protocol Supported •  
Widely Supported Countries List • SNV II • IP66 • IK10

- Embedded Access Control Application Based on LPR Software
- Supports License Plates from over 70+ Countries
- Black and White Lists for License Plate Verification
- Centralized List Management in Single Camera
- Fully Integrated with VAST 2
- Various Open APIs Available for 3rd Party Integration
- Suitable for Outdoor Scenarios with SNV II and WDR Pro II Technology
- Trend Micro IoT Security
- Supports Wiegand Protocol for Access Control Applications
- Supports Hazard ID Recognition
- Weather-proof IP66, Vandal-proof IK10 and NEMA 4X-rated Housing

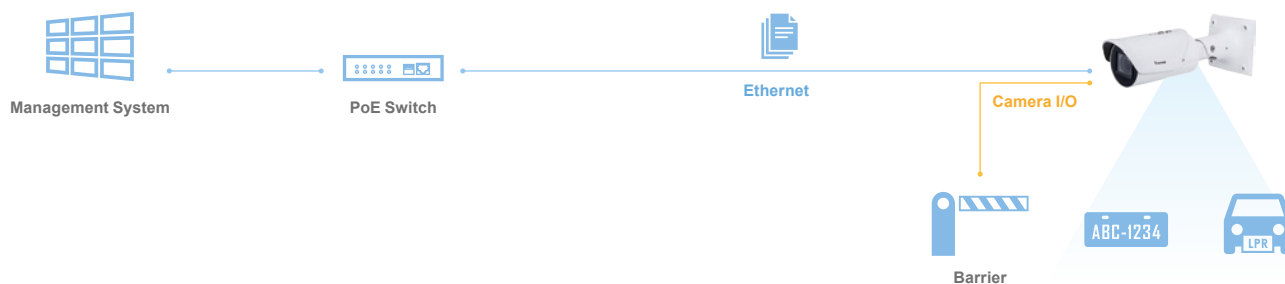


# Functions

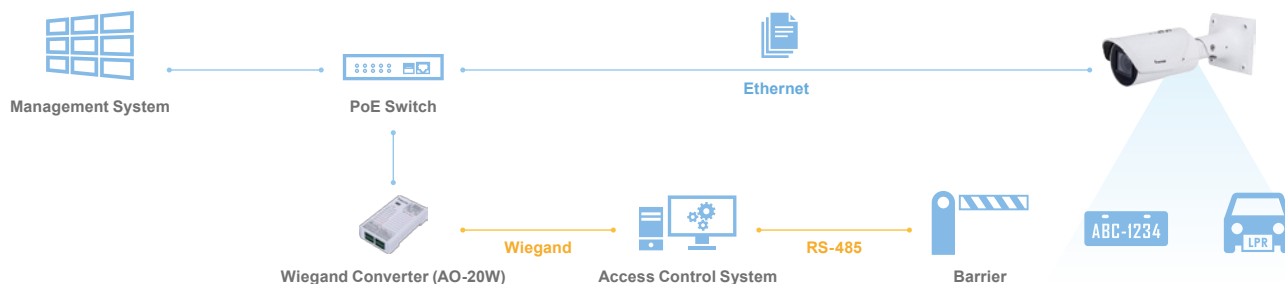
## Supported Both Simple and Complex Scenarios

The IB9365-LPR camera can work as an embedded access control application based on LPR software. It can trigger digital output device on this camera when a number plate is recognized and matched the data in list such as white list. This IB9365-LPR camera can convert number plates into Wiegand signals to work with the independent access control system.

### Simple Scenario

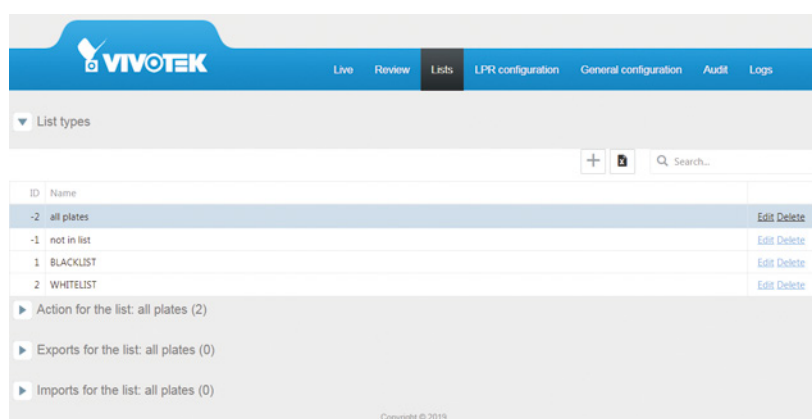


### Complex Scenario



## Built-in White List, Blacklist, All plates and Not In List For Number Plate Verification

Users can manage license plate lists for various purposes, such as a white list that triggers a welcome message, a black list that triggers an alarm, and an all plates list for access control management. Multiple lists are supported, with no limit on the number of supported license plates.



User Interface of List Management

## Functions

### Stop & Go Outdoor Parking Solution

The IB9365-LPR adopts VIVOTEK's SNV II (Supreme Night Visibility II), WDR Pro II and Smart IR II technology. With a 12-40mm focal length lens, this advanced camera is suitable for vehicle detection in outdoor scenarios such as parking areas or gas stations, in which surveillance over longer distances or in low-light conditions is necessary.



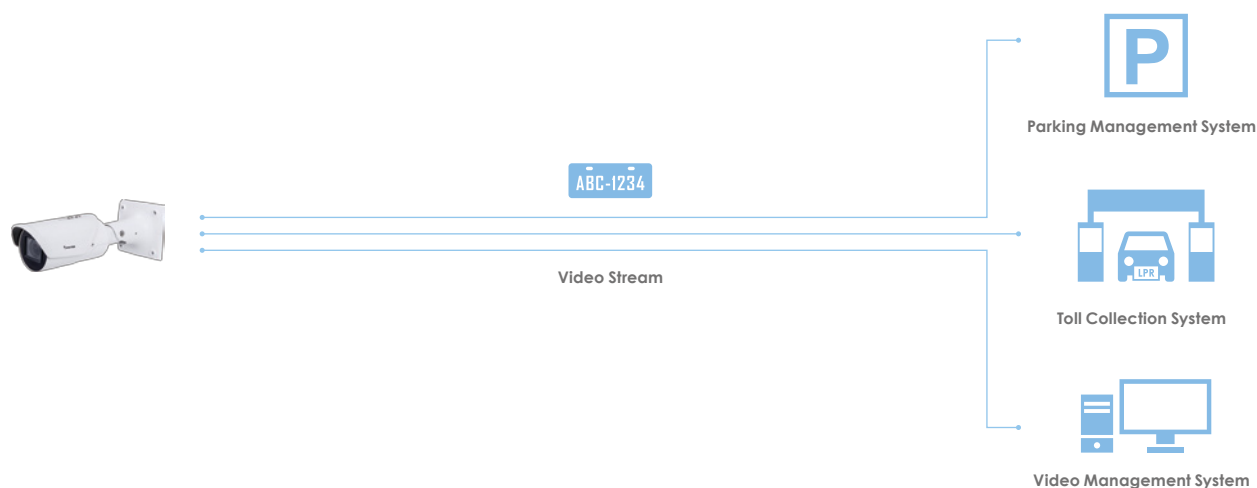
Clear Image in Low Light



Without Smart IR II vs With Smart IR II

### Easily Integrated with 3rd Party Systems Through Embedded LPR Software

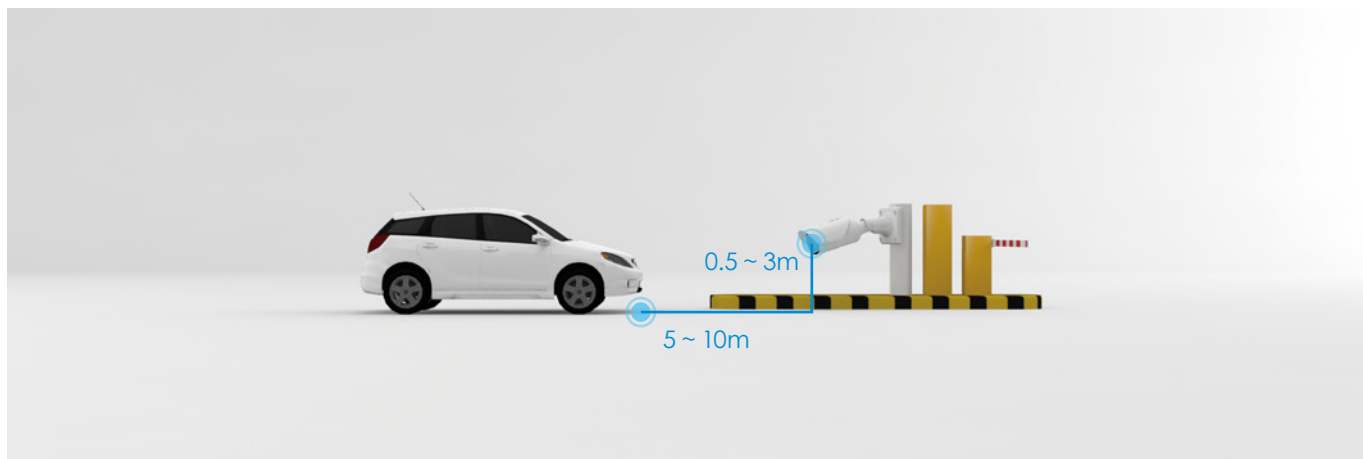
This IB9365-LPR camera can export all license plate recognition results or read on its list management. The open architecture of the device ensures that it can be easily integrated with 3rd party systems, such as parking management systems, toll collection systems or weighbridge management systems, by sending XML or JSON messages.



## Suggested Installation

Installation Height: 0.5 ~ 3 m

Installation Distance: 5 ~ 10 m



Contact your VIVOTEK regional sales manager or send mail to [lpr@vivotek.com](mailto:lpr@vivotek.com) for any questions.

## Technical Specifications

Model	IB9365-LPR
<b>System Information</b>	
CPU	Multimedia SoC (System-on-Chip)
Flash	256MB
RAM	1GB
<b>Camera Features</b>	
Image Sensor	1/2" Progressive CMOS
Max. Resolution	1920x1080
Lens Type	Motorized, Vari-focal, Remote Focus
Focal Length	f = 12 ~ 40 mm
Aperture	F1.8
Iris type	P-iris
Field of View	12° ~ 35° (Horizontal) 7° ~ 19° (Vertical) 14° ~ 40° (Diagonal)
Shutter Time	1/5 sec. to 1/32,000 sec.
WDR Technology	WDR Pro II
Day/Night	Yes
Removable IR-cut filter	Yes

## Technical Specifications

IR Illuminators	Built-in IR illuminators, effective up to 100 meters with Smart IR II, IR LED*4
Minimum Illumination	0.06 Lux @ F1.8 (Color), 50IRE 0.03 Lux @ F1.8 (Color), 30IRE <0.01 lux @ F1.8 (B/W) 0 Lux with IR illumination on
Tilt Range	90°
Rotation Range	180°
Pan/Tilt/Zoom Functionalities	ePTZ: 48x digital zoom (4x on IE plug-in, 12x built-in)
On-board Storage	Built-in 16GB MicroSD card for LPR images Slot type: MicroSD/SDHC/SDXC card slot Seamless Recording
<b>Video</b>	
Compression	H.265, H.264, MJPEG
Maximum Frame Rate	60 fps @ 1920X1080
Maximum Streams	4 simultaneous streams
S/N Ratio	66 dB
Dynamic Range	140 dB
Video Streaming	Adjustable resolution, quality and constant bit rate control, Smart Stream III
Image Settings	Time stamp, text overlay, flip and mirror, configurable brightness/contrast/saturation/sharpness, white balance, exposure control, gain, backlight compensation, privacy masks, scheduled profile settings, video rotation, 3DNR, DIS, HLC, defog, deblur, metering
<b>Audio</b>	
Audio Capability	Two-way audio
Compression	G.711, G.726
Interface	External microphone input External line output
<b>Network</b>	
Users	Live viewing for up to 10 clients
Protocols	802.1X, ARP, CIFS/SMB, CoS, DDNS, DHCP, DNS, FTP, HTTP, HTTPS, ICMP, IGMP, IPv4, IPv6, NTP, PPPoE, QoS, RTSP/RTP/RTCP, SMTP, SNMP, SSL, TCP/IP, TLS, UDP, UPnP
Interface	10 Base-T/100 Base-TX Ethernet (RJ-45) *It is highly recommended to use standard CAT5e & CAT6 cables which are compliant with the 3P/ETL standard.
ONVIF	Supported, specification available at <a href="http://www.onvif.org">www.onvif.org</a>
<b>Solution Integration</b>	
Video Motion Detection	Five-window video motion detection
Embedded Software	VIVOTEK ANPR
VADP Package	Trend Micro IoT Security
<b>Alarm and Event</b>	

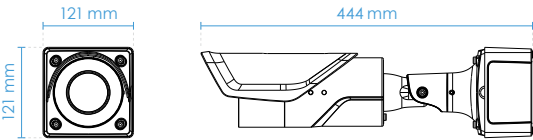
## Technical Specifications

Alarm Triggers	Motion detection, manual trigger, digital input, periodical trigger, system boot, recording notification, camera tampering detection, audio detection, shock detection, SD card life expectancy, cybersecurity events (brute force attack event, cyberattack event, quarantine event)
Alarm Events	Camera: Event notification via digital output, email, HTTP, FTP, NAS server, SD card File upload via email, HTTP, FTP, NAS server, SD card ANPR Software: Socket client, socket server, onvif event, digital output trigger, HTTP, FTP, send event to Milestone VMS, wiegand protocol supported
<b>General</b>	
Connectors	RJ-45 cable connector for 10/100Mbps Network/PoE connection Audio input Audio output AC 24 V DC 12 V Digital input *2 Digital output *2 BNC out
LED Indicator	System power and status indicator
Power Input	IEEE 802.3af PoE Class 0 AC 24V DC 12V
Power Consumption	PoE: Max. 11.9 W DC 12V: Max. 9 W AC 24V: Max. 10.5 W
Dimensions	Ø 121 x 121 x 444 mm (w/ junction box) Ø 121 x 121 x 380 mm (w/o junction box)
Weight	2,116 g (w/ junction box) 1,649 g (w/o junction box)
Casing	IP66, IK10 (Metal Housing), NEMA 4X
Safety Certifications	CE, LVD, FCC Class A, VCCI, C-Tick, UL, EN50121-4
Operating Temperature	Starting Temperature: -10°C ~ 60°C (14°F ~ 140°F) Working Temperature (IR off): -30°C ~ 60°C (-22°F ~ 140°F) Working Temperature (IR on): -30°C ~ 50°C (-22°F ~ 122°F)
Humidity	90%
Warranty	36 months
<b>System Requirements</b>	
Operating System	Microsoft Windows 8/7 Mac 10.12 (Chrome only)
Web Browser	Chrome 58.0 or above Internet Explorer 10/11
Other Players	VLC: 1.1.11 or above
<b>Included Accessories</b>	
Others	Quick installation guide, warranty card, screw pack, alignment sticker, junction box

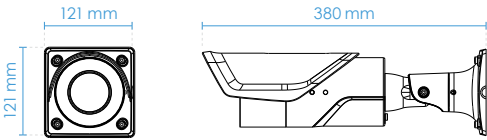


# Dimensions

w/ junction box



w/o junction box



# Compatible Accessories

## Mounting Kits



**AM-312**  
Pole Mount Adapter

## Mounting Kits



**AM-412**  
Corner Mount Adapter

## Mounting Kits



**AM-719**  
Junction Box (Standard Package)