

CONTROL ROOM

MAKE YOUR SMART CLIENT SMARTER



CONTROL ROOM MODULE

The Control Room Addon for Milestone XProtect complements the Milestone VMS solution with the typical features needed in a busy video control room or Alarm center:

- Control of multiple display's trough one client application.
- Multiscreen-Multimonitor Alarm handling
- Alarm List including Popup Window's
- Graphical user interface
- Status informations on the user interface → for example if a door is open or closed
- Map navigation

CONTROL ROOM SAMPLE

On the following slides the functionality of the control room module is shown by means of a virtual control room.

The virtual control room includes a control monitor and three remote displays

The remote displays can be controlled by events or manually via the control interface

In addition, events are shown on the control display. For example via popup.



CONTROL ROOM SAMPLE

Milestone XProtect Smart Client

08.10.2018 13:22:38

Live Playback Sequence Explorer Alarm Manager System Monitor

Map Alarm

Office

Boesch 80a

DS-Shop 02 Power on 02 Power off

DS-Meeting

HikVision Thermo - Camera

Road West

Door

DS-FuelStation

Event 1

Event 2

DS-Office

Alarm 3

Alarm 4

Lot of Cameras

Direct Show

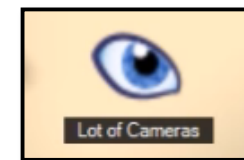
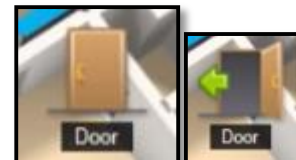
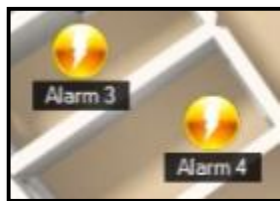
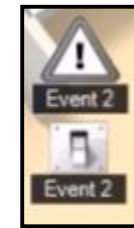
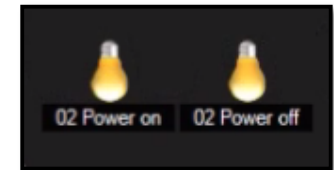
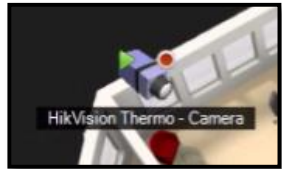
Primary SMART SMART SMART
Primary Display X-Display 1 X-Display 2 X-Display 3

Group:	Priority:	Name:	Date:	State:
Barrier Alarm	1	Barrier	08.10.2018 13:21:28	Handled / closed
Barrier Alarm	1	Barrier	08.10.2018 12:42:01	Handled / closed
Door Alarm	2	Door	08.10.2018 12:41:41	Handled / closed
Manual Event	1	Event 1	08.10.2018 12:41:17	Handled / closed
Door Alarm	2	Door	08.10.2018 12:32:36	Handled / closed
Barrier Alarm	1	Barrier	08.10.2018 12:30:58	Handled / closed


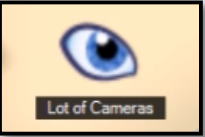
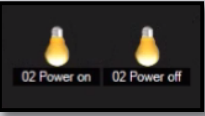
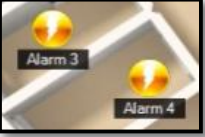
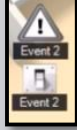
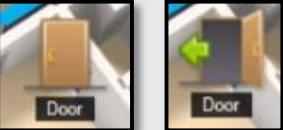
DS-Office



PROGRAMMABLE, GRAPHICAL USER INTERFACE



FUNCTIONAL ELEMENTS OF THE GRAPHICAL USER INTERFACE

	<p>Camera selection and status of the cameras. By clicking on the camera icon, the camera is switched to the selected display. The green symbol indicates that the camera is in operation. The red dot indicates that the camera is recording</p>
	<p>The eyes represent so-called viewpoints. A group of cameras that are related to each other. A click on the symbol switches these cameras (including PTZ preset's) as multiscreen to the selected display. This can also be done automatically in case of an alarm event.</p>
	<p>Output contacts (e.g. for controlling barriers or light) can be displayed on the surface with the aid of symbols. A click on the symbol triggers the corresponding action. The status of activated outputs is also displayed.</p>
	<p>Control of predefined events. Milestone allows to create user defined events. These events can have different characteristics. The icons on the graphical user interface can be used to trigger such events.</p>
	<p>In addition to user-defined events, contacts can also be controlled. These can be operated from output as well as input. Accordingly, they can be displayed or triggered.</p>
	<p>Input events can also be displayed with different symbols. For example, symbol 2 indicates that the door is open.</p>



MAP SELECTION



Different site plan levels can be integrated.

These can be selected or activated by an incoming event



SCENARIOS



Scenarios are predefined settings and allow you to control several displays simultaneously. Basically, a multi-monitor multiscreen connection can be carried out via an event or by pressing a button.

For example, at the beginning of a work shift or in the event of repetitive incidents for example day & night mode when the operators like to see other multiscreens and presets on the PTZ cameras



DISPLAY CONTROL

In order to operate the different displays, they are simply to be selected.

On the active display, cameras or multiscreen (viewpoints) of several cameras can be activated by clicking on them.



CAMERA FOCUS

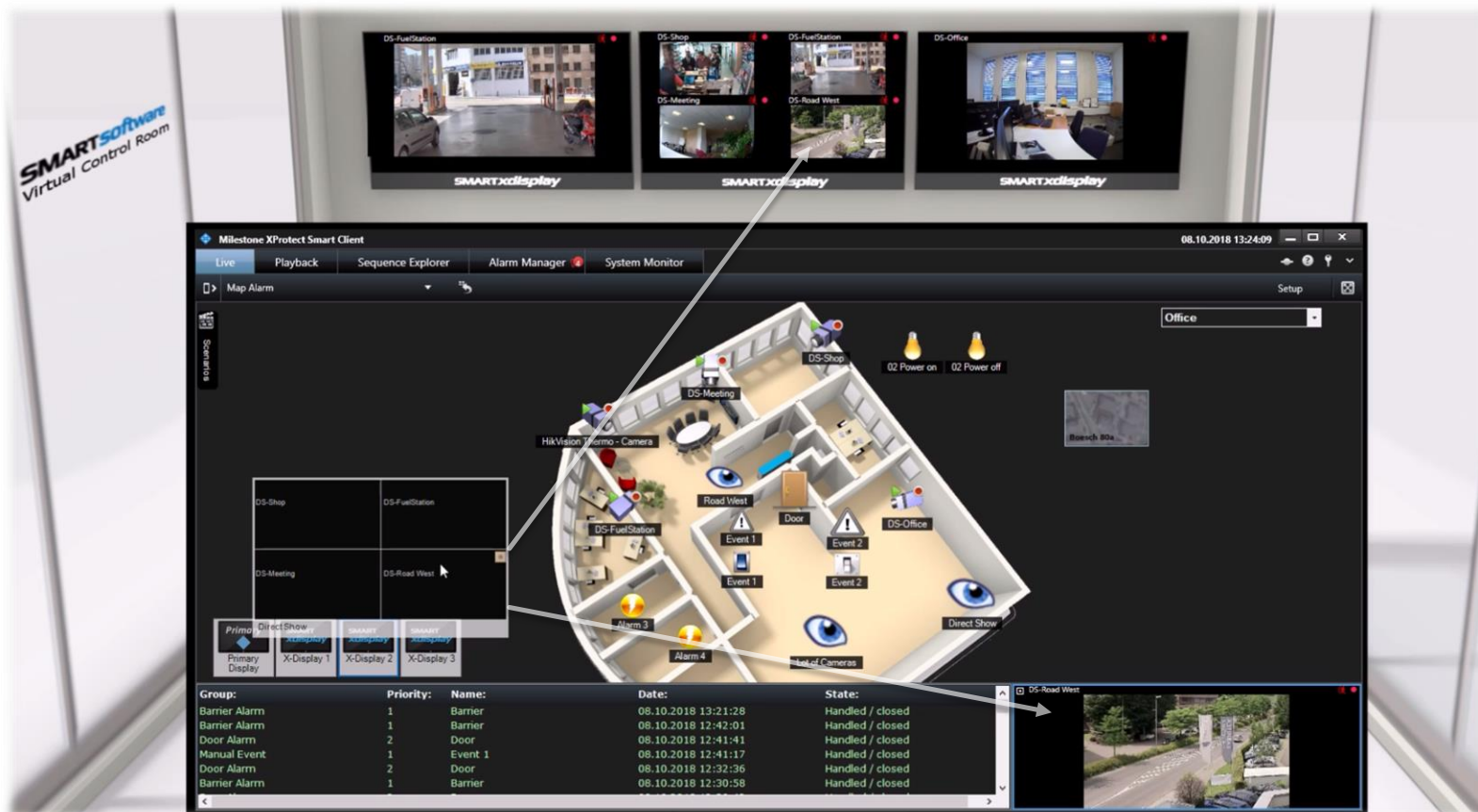


The focus window displays the camera that currently has the focus.

This is important for example to select a PTZ camera for control or to activate the audio source of the corresponding camera (if the camera is equipped with a microphone).



MULTISCREEN CAMERA FOCUS SELECTION



If a multiscreen display is switched on, you can select a desired focus camera in the multiscreen preview image



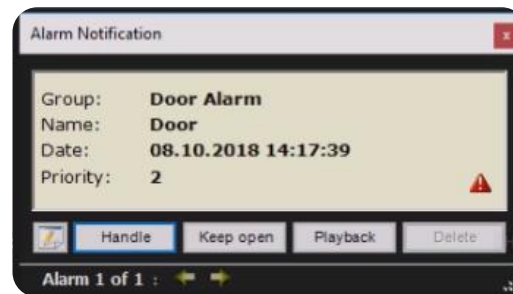
ALARM'S / ALARM HANDLING

Alarm and event processing are part of the daily business in a control room. The requirements on the system are therefore usually very high. During the development of the control room add-on many customer requirements were evaluated and incorporated into the solution. The focus is on three essential elements

Alarmlist

Group:	Priority:	Name:	Date:
Barrier Alarm	1	Barrier	08.10.2018 13:21:28
Barrier Alarm	1	Barrier	08.10.2018 12:42:01
Door Alarm	2	Door	08.10.2018 12:41:41
Manual Event	1	Event 1	08.10.2018 12:41:17
Door Alarm	2	Door	08.10.2018 12:32:36
Barrier Alarm	1	Barrier	08.10.2018 12:30:58

Popup-Window



Camera & Multiscreenselection



ALARM MONITORING

In case of an alarm, the corresponding cameras are shown to the available displays, could be in a single screen or multiscreen format depending the configuration.

At the same time, a red entry appears in the alarm list, which changes to a neutral, green entry after successful handling.

Group:	Priority:	Name:	Date:	State:
Door Alarm	2	Door	08.10.2018 14:17:39	Unhandled / New
Barrier Alarm	1	Barrier	08.10.2018 13:21:28	Handled / closed
Barrier Alarm	1	Barrier	08.10.2018 12:42:01	Handled / closed
Door Alarm	2	Door	08.10.2018 12:41:41	Handled / closed
Manual Event	1	Event 1	08.10.2018 12:41:17	Handled / closed
Door Alarm	2	Door	08.10.2018 12:32:36	Handled / closed



ALARM POPUP

As an efficient tool a Pop-Up Window appears in case of an alarm

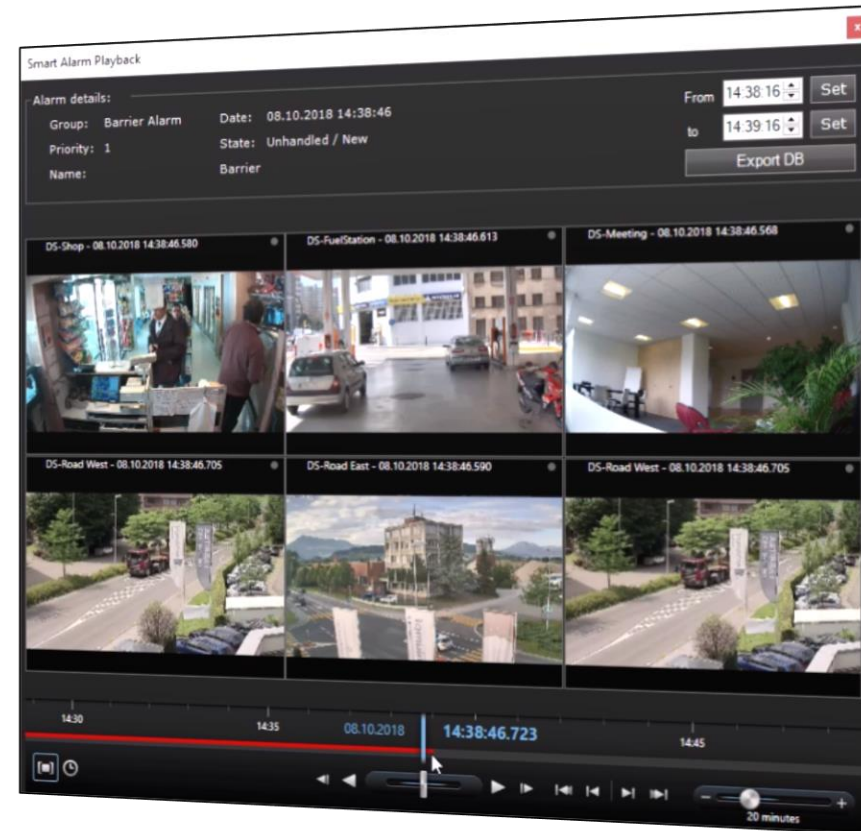


Alarminformations



Handlingoptions
(includes Playback)

Maybe other Alarms with lower priority



One Click Playback of the cameras on which this event was related to



SUMMARY

Milestone Xprotect is a state-of-the-art video management software

The open platform allows to create solutions for specific markets based on the strong Milestone Engine. Smart Software Control Room is such a solution for use in control rooms.

According the motto “from users for users”, functionalities were implemented that are expected in the traditional control room environment and guarantee a fluid workflow.



SMART RC

REMOTE CONTROL YOUR SMART CLIENT



SMART RC

The Smart Client is the core tool of any Surveillance Operator to view Live Video and investigate in recordings. Smart RC extends almost all functionalities to different API's to enable Remote Control of the entire Application.

Smart RC is one of the controllable Display types in the Smart Control Room Application and it is available for other integrations too.

- Easy configuration and simple licensing
- Self- configuring HTML API providing System dependent methods
- Sample Webpages showing some capabilities are included
- Custom webpages including html, css and images can be hosted
- Advanced XML API including Documentation and API Tool available

SMART RC EASY CONFIGURATION

Once the Smart Client Plugin is installed, it can simply be licensed and activated in the Smart Client options

EET Security - Smart RC - Vers. 4.2.0.3

Smart Remote Control Plugin

Enable Smart RC on this Smart Client

Port and Connection Properties:

Use SSL Connection Select Certificate:

Self signed certificate

Accept connections on port: 4040

--> Used for HTTP(s) Web connection as well as for TCP Keep Alive!

Allow commands from all hosts

Hostname	Start IP range:	end IP:

Select host range row and press "DEL" to remove Add

Information:

Search additional Web Directory

G:\01_CloudStation\CloudStation\EET\Development\01_SmartPlugins\100_SmartRC_DemoPage

<https://localhost:4040> -> Http default

<https://localhost:4040/info> -> Method information HTML

<https://localhost:4040/info.bt> -> Method information ASCII *.bt

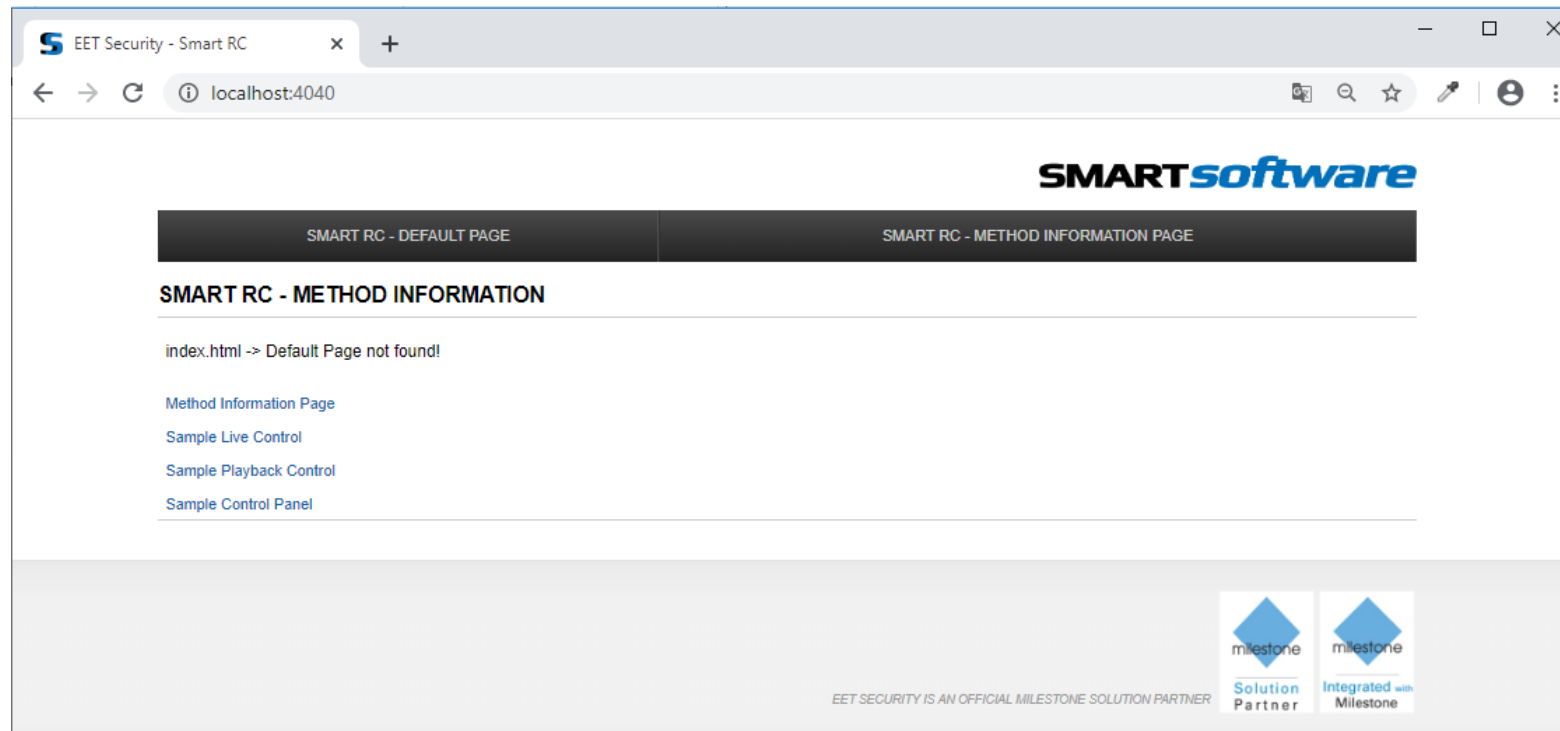
License:

Licensed for SLC:	M01-C02-201-02-6C42E0
Smart RC License Key:	C261 - B802
Licenses:	(2 used of 10)
Licenses Info:	Demo
Expiration date:	Unlimited

Reload License

SMART RC HTTP API – METHOD INFORMATION

- Access to the runtime generated method information page by Browser
- Direct access to the method list using the Event Sender from our Toolbox



SMART RC HTTP API – METHOD INFORMATION

EET Security - Smart RC

localhost:4040/info

SMART RC - METHOD INFORMATION

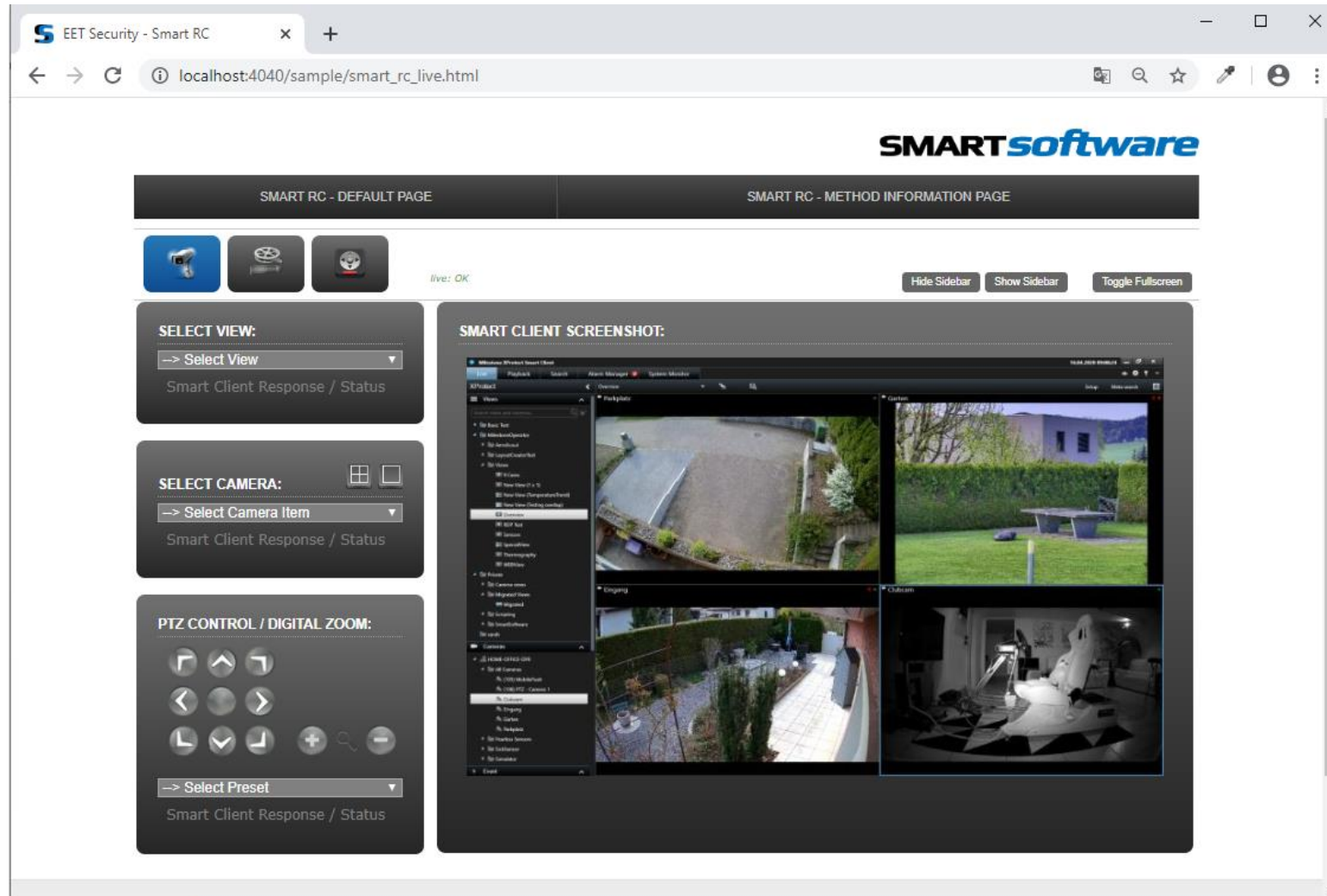
Group / Name:	Description:	Full URL:	Execution Status:	
Application	Smart Client Application Control Commands			
EnterFullScreen	Enter Fullscreen Mode	http://127.0.0.1:4040/appcmd?enterfullscreen	Execute	
ExitFullScreen	Exit Fullscreen Mode	http://127.0.0.1:4040/appcmd?exitfullscreen	Execute	
ToggleFullScreen	Toggle Fullscreen Mode	http://127.0.0.1:4040/appcmd?togglefullscreen	Execute	
ShowSidePanel	Show the Side Panel	http://127.0.0.1:4040/appcmd?showsidepanel	Execute	
HideSidePanel	Hide the Side Panel	http://127.0.0.1:4040/appcmd?hidesidepanel	Execute	
Maximize	Maximize the Smart Client	http://127.0.0.1:4040/appcmd?maximize	Execute	
Restore	Restore the Smart Client	http://127.0.0.1:4040/appcmd?restore	Execute	
Close	Close the Smart Client	http://127.0.0.1:4040/appcmd?close	Execute	
Smart Client Mode				
LiveMode	Change_to_test	Switch to View test	http://127.0.0.1:4040/selectview?name=Private.SmartSoftware.test	Execute
PlaybackMode				
SetupMode	Go to Smart Client Setup mode	http://127.0.0.1:4040/appcmd?setup	Execute	
Smart Client - Change main View	Smart Client Main Screen View Control Commands			
Change_to_test	Switch to View test	http://127.0.0.1:4040/selectview?name=Private.SmartSoftware.test	Execute	
Change_to_GeckoTest	Switch to View GeckoTest	http://127.0.0.1:4040/selectview?name=Private.Scripting.GeckoTest	Execute	
Change_to_GeckoTest4	Switch to View GeckoTest4	http://127.0.0.1:4040/selectview?name=Private.Scripting.GeckoTest4	Execute	
Change_to_GeckoTest3	Switch to View GeckoTest3	http://127.0.0.1:4040/selectview?name=Private.Scripting.GeckoTest3	Execute	

SMART RC HTTP API – METHOD GROUPS

Group / Name:	Description:	Full URL:
Application	Smart Client Application Control Commands	
Smart Client Mode	Smart Client Mode Control Commands	
Smart Client - Change main View	Smart Client Main Screen View Control Commands	
Smart Client Send View to Screen	Smart Client send View to Screen Control Commands	
Smart Client close window on Screen	Smart Client close Window on Screen Control Commands	
Smart Client View Item	Smart Client Select View Item Control Commands	
ViewItemCommand	Smart Client View Item Control Commands	

Group / Name:	Description:	Full URL:
ScreenImage	Get Image from Smart Client	
Playback	Send Playback Commands to Smart Client	
PTZ	PTZ Commands for the selected Camera	
PTZ Presets	Preset Commands for Cameras	
DB Export	Smart Client Database Export Control Commands	
AVI Export	Smart Client Media Player Export Control Commands	
Smart Client Message	Send Message to Smart Client Commands	

SMART RC HTTP API – LIVE SAMPLE

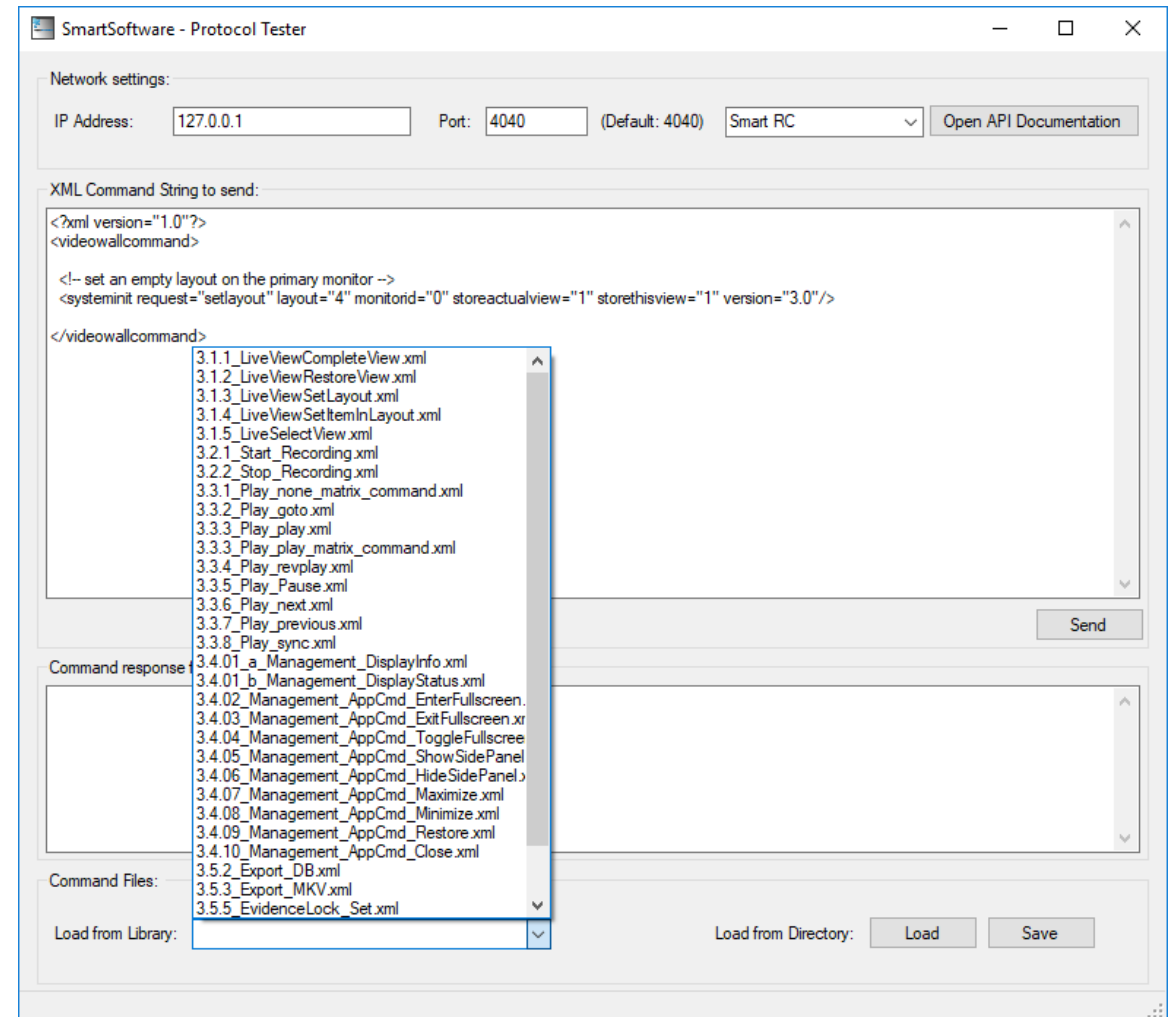


The screenshot displays a web browser window with the following elements:

- Browser Tab:** EET Security - Smart RC
- Address Bar:** localhost:4040/sample/smart_rc_live.html
- Page Header:** SMART software logo
- Navigation:** SMART RC - DEFAULT PAGE | SMART RC - METHOD INFORMATION PAGE
- Camera Status:** Three camera icons with a "live: OK" indicator.
- Controls:** Hide Sidebar, Show Sidebar, Toggle Fullscreen buttons.
- SELECT VIEW:** Dropdown menu with "Select View" and "Smart Client Response / Status" text.
- SELECT CAMERA:** Dropdown menu with "Select Camera Item" and "Smart Client Response / Status" text.
- PTZ CONTROL / DIGITAL ZOOM:** A set of directional and zoom buttons, with a "Select Preset" dropdown below.
- SMART CLIENT SCREENSHOT:** A window showing a multi-camera view of an outdoor area, including a building, a lawn, and a playground.

SMART RC ADVANCED XML API

- API Protocol testing Tool available upon request
- Fully documented XML API
- Advanced Features including Evidence Lock and Export
- Shorter development Time for custom video control applications



ALARM DESK EDITION

SOMETIMES LESS IS MORE...



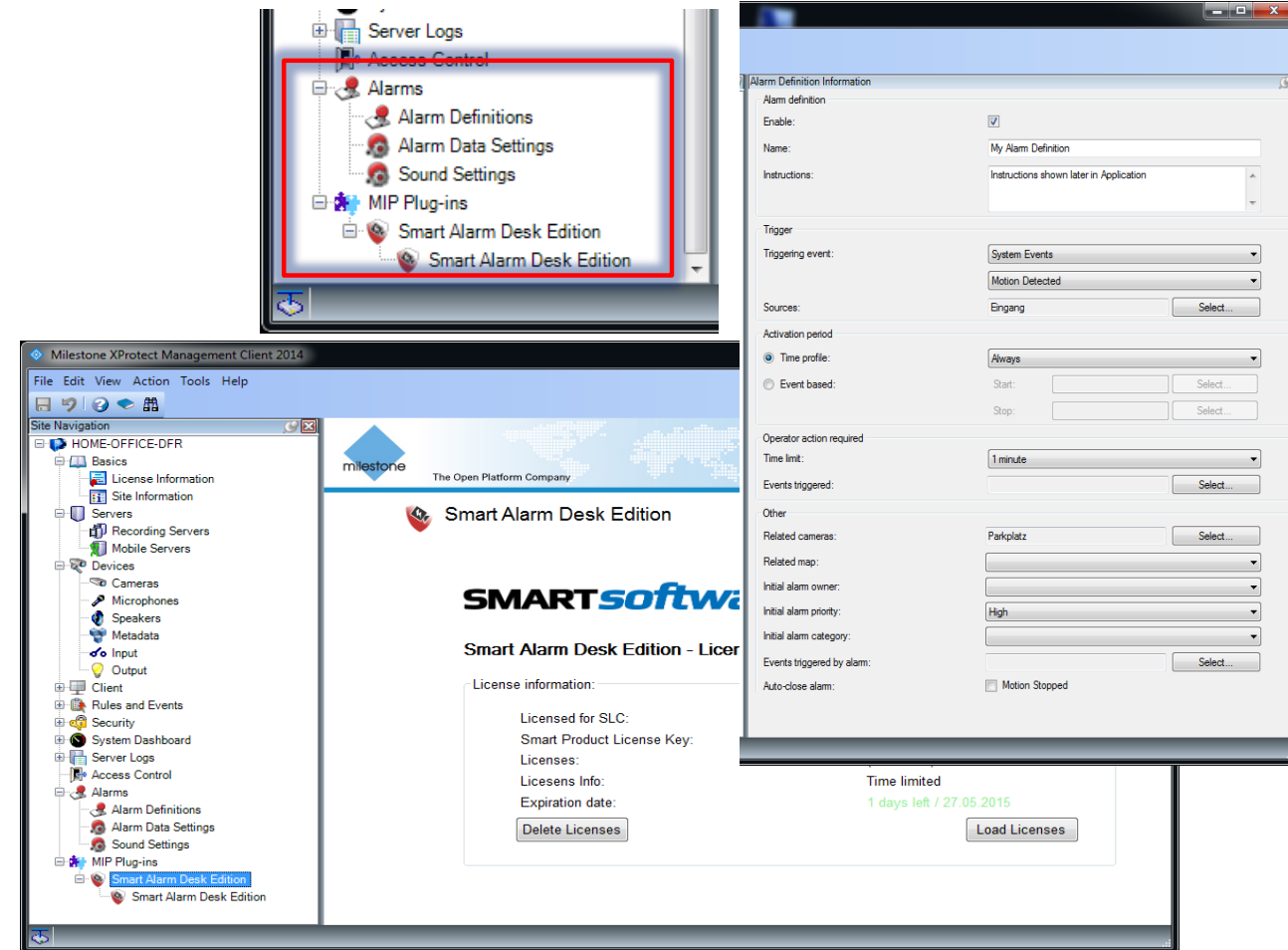
ALARM DESK EDITION

The Smart Client is a powerful tool to view Live Video and investigate in recordings. The best way to make sure the operator is well educated and knows how to use it. Sometimes this can be too much and the use case is different. A receptionist usually works with her pc. Having the Smart Client open can be too much. Alarm Desk Edition offers the following features:

- Popup functionality
- 2 Way Audio
- Alarm verification and handling
- Trigger events to open a door or similar
- Alarm List
- Easy Playback

EASY CONFIGURATION AND SIMPLE LICENSING

- Use the well-known XProtect built-in Event Server and Alarm definition capabilities
- XProtect product dependent alarm features
- Simple and central license management inside the Management Application.
- Dynamic license registration of the running Smart Alarm – Desk edition clients. Install as many clients as you want on different PC's. The application looks for free licenses and will inform you if there are actually too many instances running.
- Single point of configuration and licensing



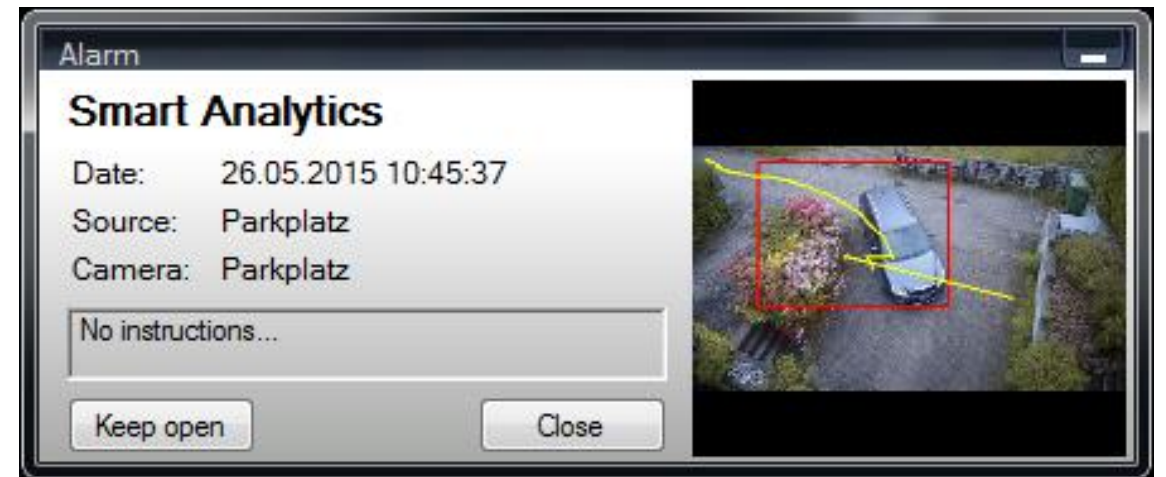
ALARM DESK EDITION POP UP CLIENT

- Easy to use
- Ideal for Desk applications
- Automatic alarm pop-up
- Alarm playback and live mode
- Dynamic multi- camera support
- Bi-directional Audio support
- Direct Output or Event triggering
- Alarm thumbnail preview with quick handling



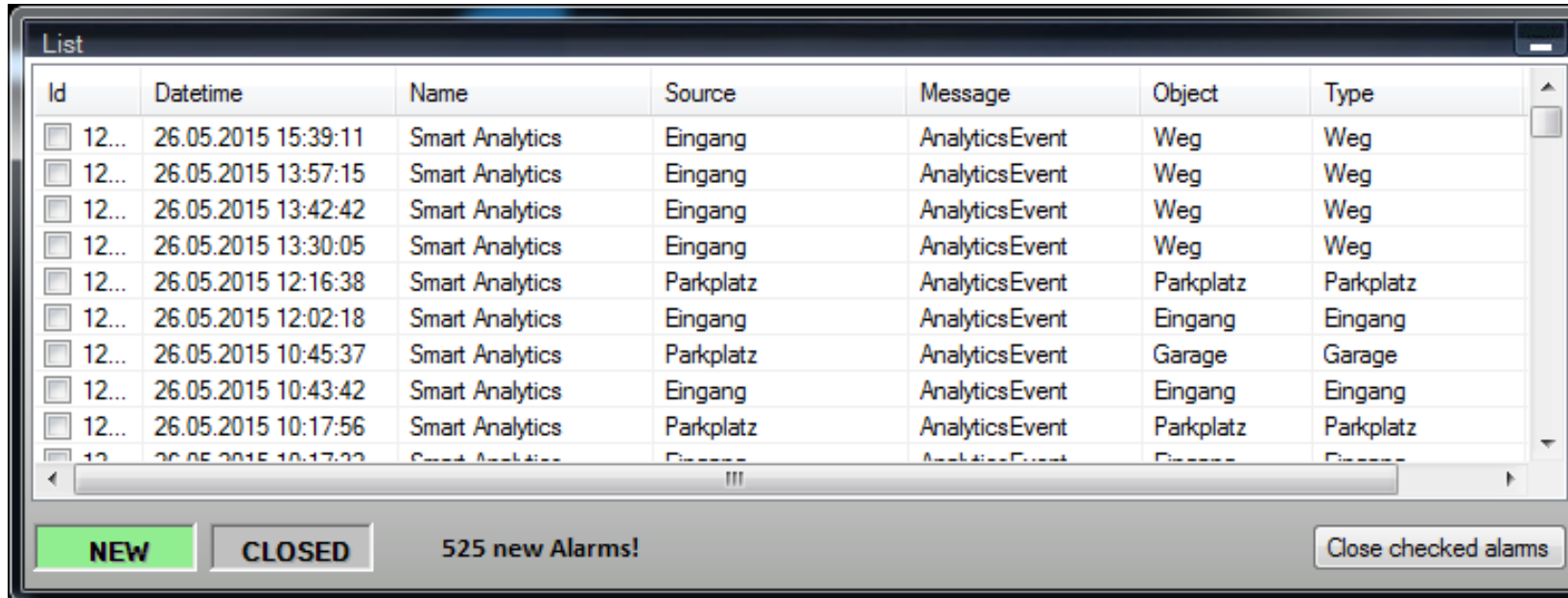
ALARM DESK EDITION ALARM PREVIEW

- Simple alarm preview when hovering over an alarm
- One click alarm playback
- Fast and simple alarm- video export
- Analytics overlay in preview



ALARM DESK EDITION ALARM LIST ON DEMAND

- Easy alarm management (dependent on XProtect product version)
- Fast access for alarm investigation
- List shown on demand



Id	Datetime	Name	Source	Message	Object	Type
<input type="checkbox"/> 12...	26.05.2015 15:39:11	Smart Analytics	Eingang	AnalyticsEvent	Weg	Weg
<input type="checkbox"/> 12...	26.05.2015 13:57:15	Smart Analytics	Eingang	AnalyticsEvent	Weg	Weg
<input type="checkbox"/> 12...	26.05.2015 13:42:42	Smart Analytics	Eingang	AnalyticsEvent	Weg	Weg
<input type="checkbox"/> 12...	26.05.2015 13:30:05	Smart Analytics	Eingang	AnalyticsEvent	Weg	Weg
<input type="checkbox"/> 12...	26.05.2015 12:16:38	Smart Analytics	Parkplatz	AnalyticsEvent	Parkplatz	Parkplatz
<input type="checkbox"/> 12...	26.05.2015 12:02:18	Smart Analytics	Eingang	AnalyticsEvent	Eingang	Eingang
<input type="checkbox"/> 12...	26.05.2015 10:45:37	Smart Analytics	Parkplatz	AnalyticsEvent	Garage	Garage
<input type="checkbox"/> 12...	26.05.2015 10:43:42	Smart Analytics	Eingang	AnalyticsEvent	Eingang	Eingang
<input type="checkbox"/> 12...	26.05.2015 10:17:56	Smart Analytics	Parkplatz	AnalyticsEvent	Parkplatz	Parkplatz
<input type="checkbox"/> 12...	26.05.2015 10:17:22	Smart Analytics	Eingang	AnalyticsEvent	Eingang	Eingang

NEW **CLOSED** 525 new Alarms! Close checked alarms

TOOLBOX

SOMETIMES YOU JUST NEED A LITTLE BIT MORE...



TOOLBOX

Sometimes the simple things are the most needed. The toolbox may give you exactly those simple solutions which makes your customer 100% satisfied. There will be more and more tools added to the toolbox.

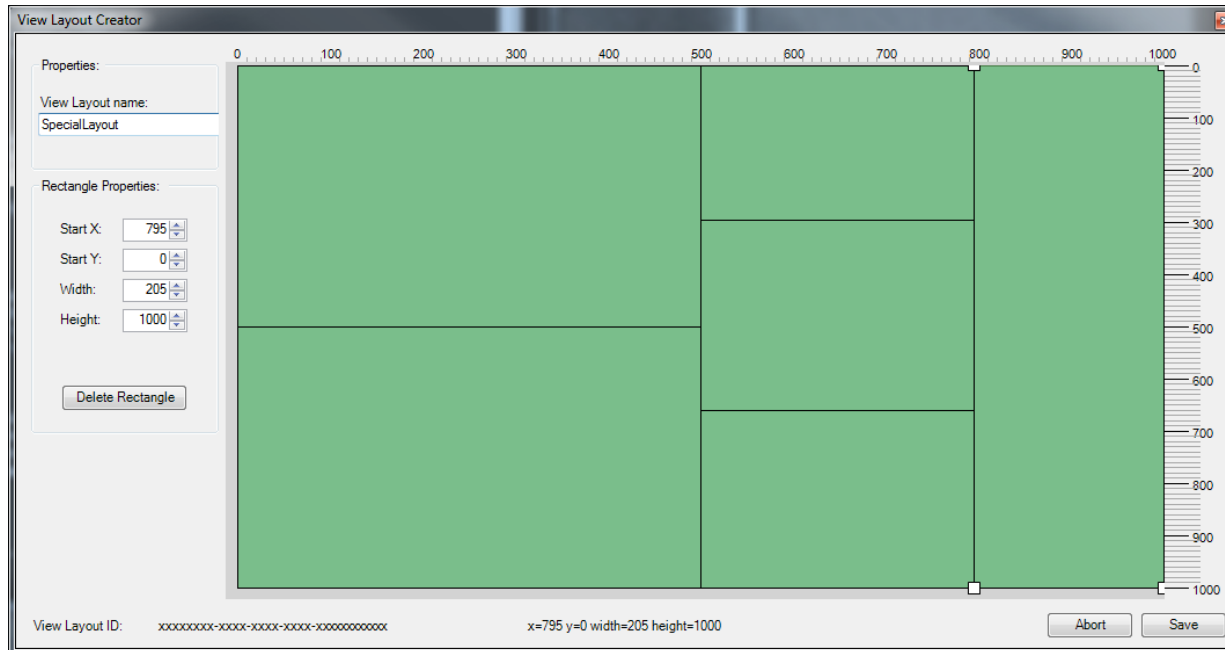
As of today, the following tools are part of the Toolbox:

- Plugins for the Xprotect Smart Client
 - Layout Creator
 - Microsoft RDP Remote Desktop Client View Item
 - HTML 5 Browser View Item (based on the famous Gecko engine)
 - Customizable Camera Name overlay
- Event Server Plugins
 - Event Sender – HTTP/S or TCP Commands triggered by Event
 - Event Timer – Create special timers based on Events

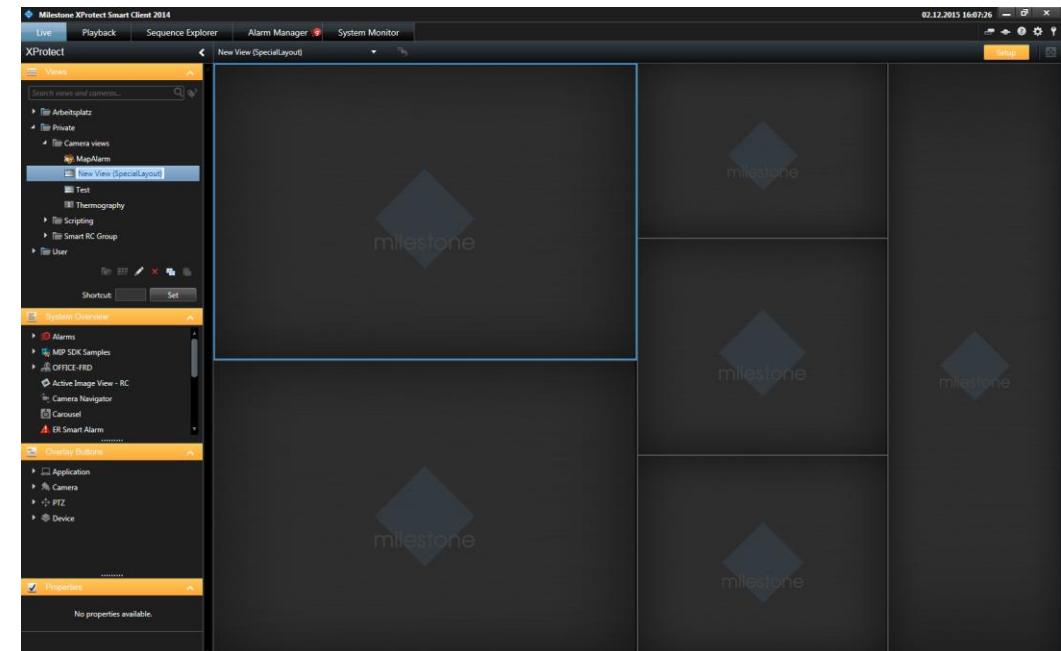
TOOLBOX – SMART CLIENT LAYOUT CREATOR

Have you ever been stuck when your customer asked for an unusual Layout in the Client?
The Layout creator let you draw those Layouts by yourself:

Design...



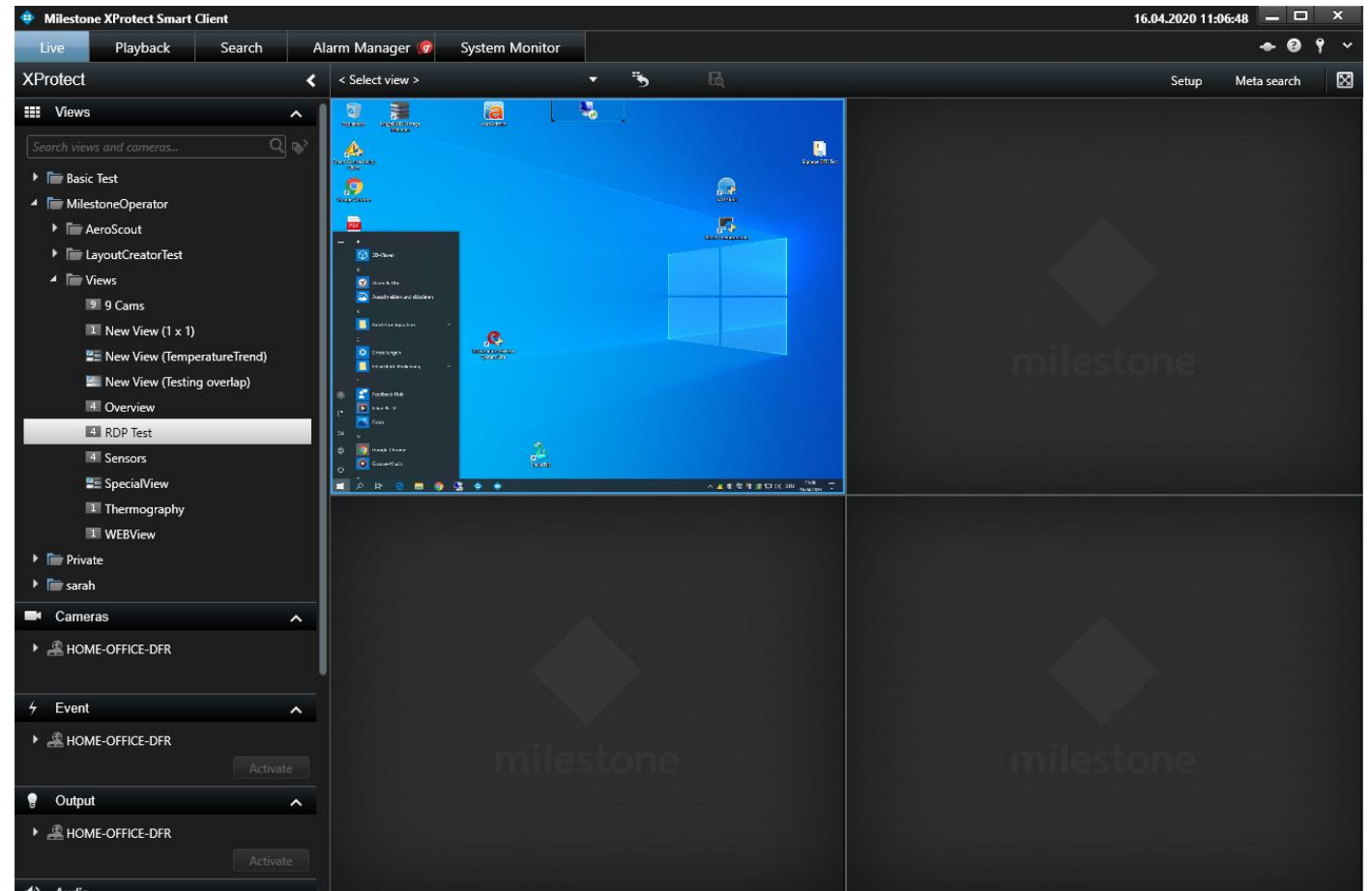
... and use them!



TOOLBOX – SMART CLIENT RDP VIEW ITEM

Did you ever need a simple integration of a 3rd party Client Application into the Smart Client?

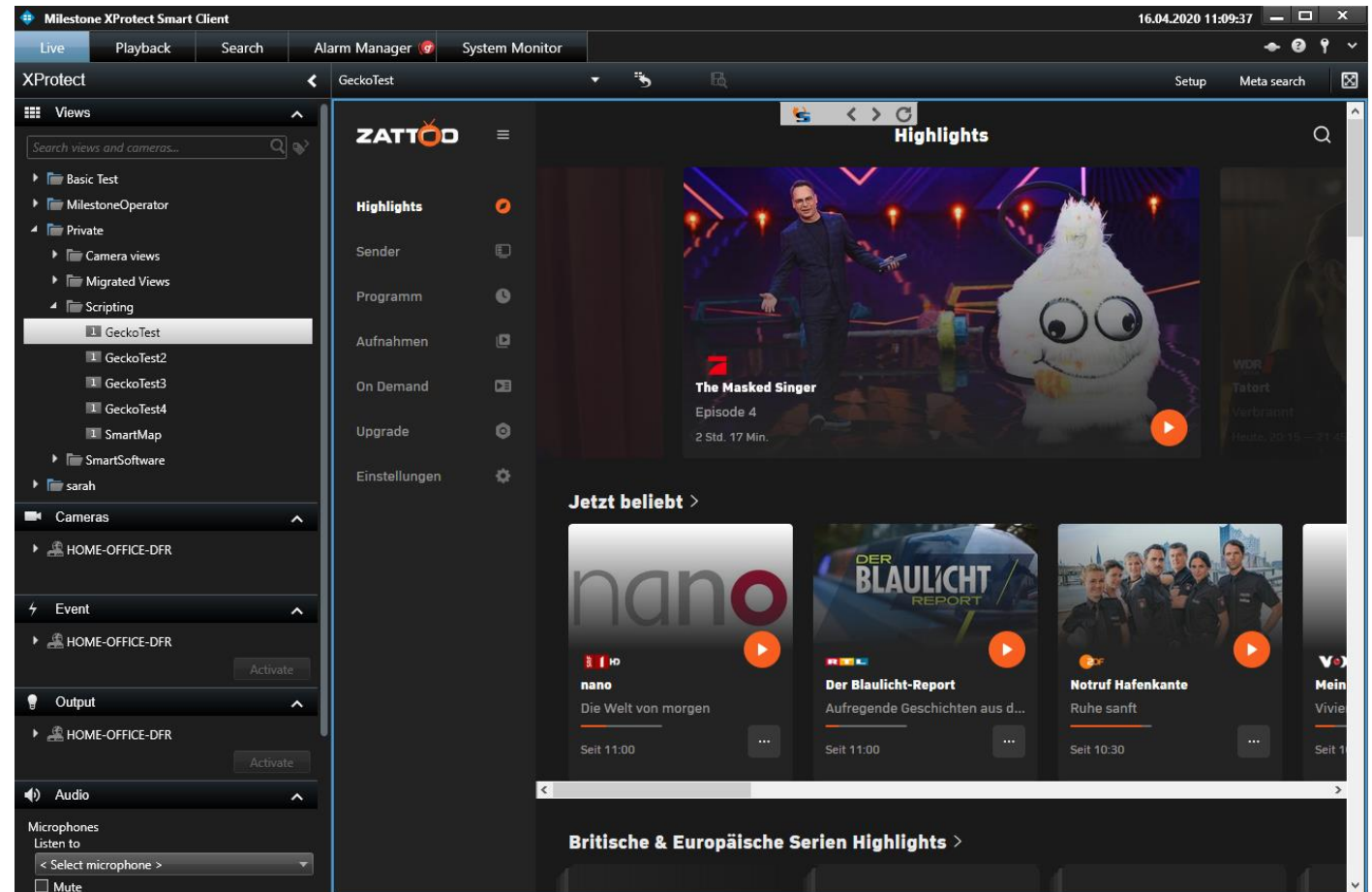
What if you just can use an integrated RDP Client connection?



TOOLBOX – SMART CLIENT HTML 5 VIEW ITEM

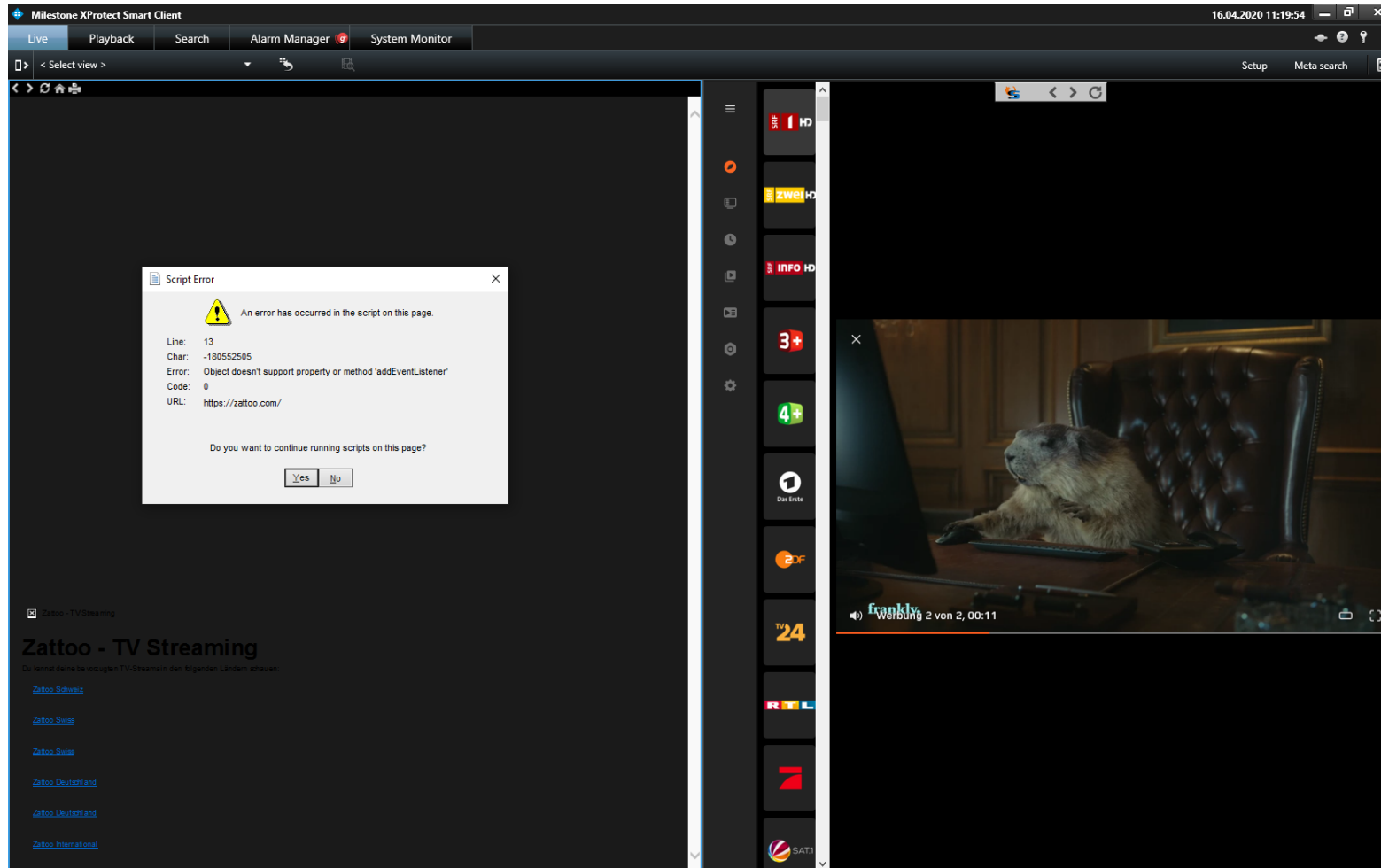
And what is about a modern Web content?

Have you ever had layout problems when showing content of a HTML 5 Webpage?



TOOLBOX – SMART CLIENT HTML 5 VIEW ITEM

https://zattoo.com



Built-in
HTML Page
View Item

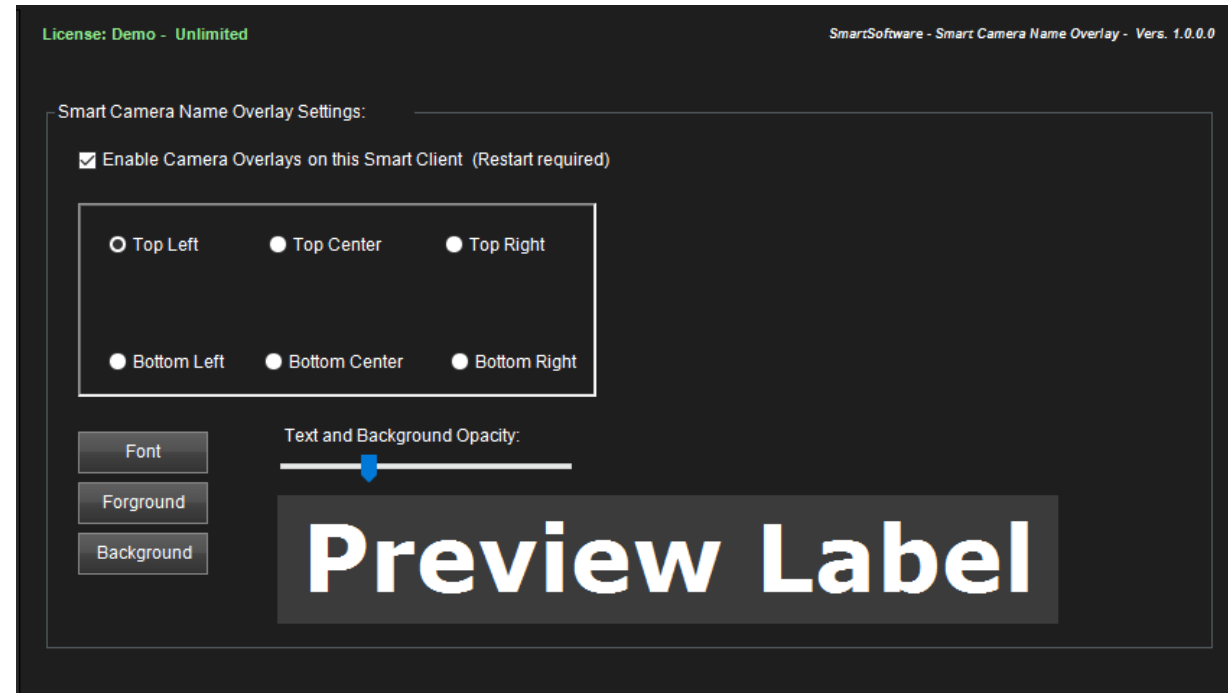
FAILS!
Scripting Errors
Layout issues
etc.

Toolbox
Smart HTML5 Browser
View Item
WORKS PERFECT!

TOOLBOX – SMART CLIENT CAMERA NAME OVERLAY

What if you have a screen mounted on the wall a few meters away of the operator. Is he able to see the Camera name in the Header of the Camera View Item?

Probably not... with the Camera Name Overlay Plugin you can show the Camera name as on overlay with customized properties.



TOOLBOX – SMART CLIENT CAMERA NAME OVERLAY

Impossible to read Camera Name from distance!



Camera Name is well readable from distance!



TOOLBOX – EVENT SERVER EVENT SENDER

Have you ever had the need to execute a http or tcp command from the VMS to any 3rd part System?

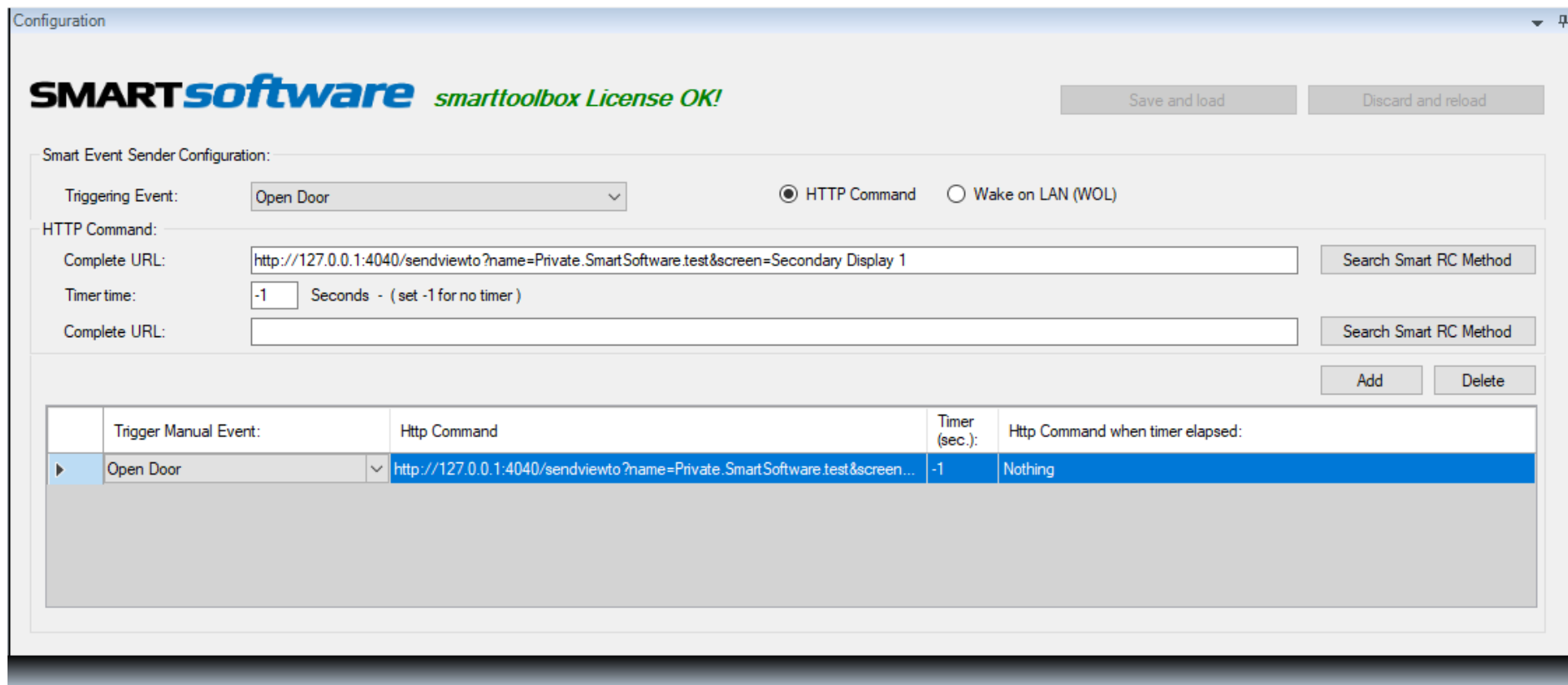
For instance to activate a Wiper on a Camera or send a tcp command to a external device?

Using the Event Sender Plugin from the Toolbox enables you to send such a command triggered by an Event from the VMS.

There is even native support of the Smart RC Plugin to control the Smart Client with just a few clicks of configuration.

TOOLBOX – EVENT SERVER EVENT SENDER

Simply choose the User defined Event which triggers your http or tcp command:



Configuration

SMARTsoftware *smarttoolbox License OK!* Save and load Discard and reload

Smart Event Sender Configuration:

Triggering Event: HTTP Command Wake on LAN (WOL)

HTTP Command:

Complete URL: Search Smart RC Method

Timer time: Seconds - (set -1 for no timer)

Complete URL: Search Smart RC Method

Add Delete

	Trigger Manual Event:	Http Command	Timer (sec.):	Http Command when timer elapsed:
▶	Open Door	http://127.0.0.1:4040/sendviewto?name=Private.SmartSoftware.test&screen...	-1	Nothing

TOOLBOX – EVENT SERVER EVENT SENDER

... or import all possible SmartRC commands to choose from:

Get Smart RC Command x

Smart Client Address: Smart RC Port:

- Change_to_New View (1 + 2*) - Switch to View New View (1 + 2*)
- Change_to_New View (Simple) - Switch to View New View (Simple)
- Change_to_New View (PictureInPicture) - Switch to View New View (PictureInPicture)
- Change_to_TagCounter - Switch to View TagCounter
- Change_to_AssetFollower - Switch to View AssetFollower
- Send_test_to_Primary Display - Send View test to Primary Display
- Send_test_to_Secondary Display 1 - Send View test to Secondary Display 1
- Send_GeckoTest_to_Primary Display - Send View GeckoTest to Primary Display
- Send_GeckoTest_to_Secondary Display 1 - Send View GeckoTest to Secondary Display 1
- Send_GeckoTest4_to_Primary Display - Send View Gecko Test4 to Primary Display
- Send_GeckoTest4_to_Secondary Display 1 - Send View Gecko Test4 to Secondary Display 1
- Send_GeckoTest3_to_Primary Display - Send View Gecko Test3 to Primary Display
- Send_GeckoTest3_to_Secondary Display 1 - Send View Gecko Test3 to Secondary Display 1
- Send_SmartMap_to_Primary Display - Send View SmartMap to Primary Display
- Send_SmartMap_to_Secondary Display 1 - Send View SmartMap to Secondary Display 1
- Send_WebComparison_to_Primary Display - Send View WebComparison to Primary Display
- Send_WebComparison_to_Secondary Display 1 - Send View WebComparison to Secondary Display 1
- Send_GeckoTest2_to_Primary Display - Send View Gecko Test2 to Primary Display
- Send_GeckoTest2_to_Secondary Display 1 - Send View Gecko Test2 to Secondary Display 1
- Send_MyView_to_Primary Display - Send View MyView to Primary Display

TOOLBOX – EVENT SERVER EVENT TIMER

The Event Timer is used to start a timer by Event and when it elapses it triggers an other Event. But what when the starting Event is triggered when the timer is already running?

Other than the built-in Timers from the rule system, the Event Timer will reset the timer in this case and starts counting from the beginning. This can be used in various scenarios where this is needed.

Example:

You create a rule where an Event is changing your Smart Wall View to VIEW-B for 20 Sec. and after that time, it will switch back to VIEW-A.

This is working as long as the same Event is not triggered again. Imaging what happens if this Event is triggered again after 19 Sec. How long is VIEW-B shown before the first timer ends and switches back to VIEW-A even if VIEW-B should be shown?